

Advancing the Turfgrass Industry in New Jersey and the World

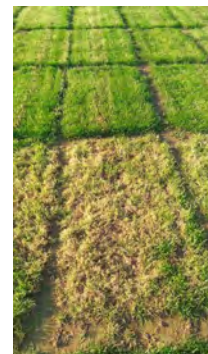


FUNDING TURF ADVANCEMENTS #5: Supporting the NTEP Trials at Rutgers

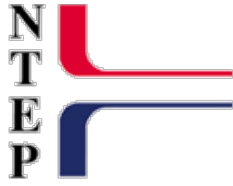
The New Jersey Turfgrass Association (NJTA) is proud to help support the National Turfgrass Evaluation Program (NTEP) by financially backing the research performed at the Rutgers Center for Turfgrass Science. Rutgers is one of many universities throughout the US and Canada that conducts uniform evaluation trials of turfgrass varieties for the collaborative effort.

Each year, Rutgers dedicates seven or eight acres of turf research space to NTEP research entries. With painstaking detail, the particulars of the soil (pH, phosphorous, potassium, sand, silt, clay), mowing height and frequency, irrigation quantities and timing, as well as other growth factors are recorded.

Unlike typical agricultural experiments that measure yield or nutritive value, turfgrass quality is a subjective visual measure of aesthetics (density, uniformity, texture, smoothness, growth habit, and color) and functional use.



Dr. William Meyer, the Director of the Turfgrass Breeding Project at Rutgers since 1996, explains that the most common way of assessing turfgrass quality is a visual rating system based on the evaluator's judgement. "In all of our trials, we grade turfgrass from nine to one, with nine being best/ideal and one being worst/dead. Each trial consists of three replications of each entry," he said. "Then, a statistical analysis is conducted on all of the trials so that a level of 95% confidence is established."



The NTEP currently has over 35,000 plots across North America. A single data record consists of information collected over a full year on an individual 25 square foot plot at one location. Since 1980, the NTEP has collected more than one million data records!

NTEP results allow professionals to determine if a cultivar is well adapted to a local area or level of turf maintenance. Groups that utilize this data include:

- Turfgrass breeders working to develop new varieties
- Seed companies marketing new grasses
- Turf managers trying to select the best grass for their situation (golf course superintendents, athletic field managers, lawn care operators)
- Developers that must "spec" grass seed cultivars for bids (federal, state and local turf managers, golf course architects, athletic field builders)
- Brokers that purchase and sell grass seed worldwide to homeowners

Overall, the NJTA is pleased to financially support Rutgers' participation in the NTEP trials that provide such a huge wealth of useful information to the greens industry. If anyone wants to see the results of these trials, please visit NTEP.org or turf.rutgers.edu.



**FUNDING TURF ADVANCEMENTS is Brought to You By:
YOU & ALL Members of the NJTA**

The NJTA exists solely to promote the turfgrass industry in the Garden State through education, professionalism, and leadership. Thanks to the support of members like you, the NJTA is able to subsidize some of the research needs of the Rutgers University Center for Turfgrass Science.

If you would like to support these efforts further, you are welcome to [Donate to the NJTA Foundation](#) anytime!



NJ Green Expo:

December 4-6, 2018

2018 Green Expo: *Growing Turfgrass Together*
The Borgata Hotel, Atlantic City, NJ
[Early Attendee Registration Open \(PDF\)](#)
[Online Attendee Registration Open](#)